

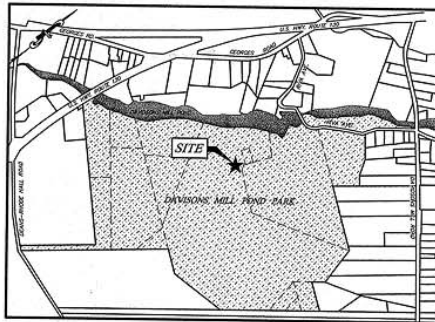
SITE PLAN

SOLAR PHOTOVOLTAIC SYSTEM SITE DESIGN

FOR

DAVIDSON'S MILL POND PARK

42 RIVA ROAD
BLOCK 29.03 LOT 11
TOWNSHIP OF SOUTH BRUNSWICK, MIDDLESEX COUNTY, NEW JERSEY



AREA MAP
1" = 1000'

INDEX OF SHEETS	
SHEET	SHEET TITLE
1	COVER SHEET
2	SITE LAYOUT & GRADING PLAN
3	SOIL EROSION & SEDIMENT CONTROL PLAN
4	ELECTRICAL PLAN
5	ELECTRICAL DETAILS

PROTECT YOURSELF
A PHONE CALL
CAN BE YOUR INSURANCE POLICY



WHAT YOU DON'T KNOW CAN HURT YOU.
THE STATE OF NEW JERSEY REQUIRES INSPECTION OF CELEBRATING
ENGINEERS, OR ANY PERSON PREPARED TO SIGNER THE EARTH'S
SURFACE APPLICABLE IN THE STATE.

GENERAL NOTES:

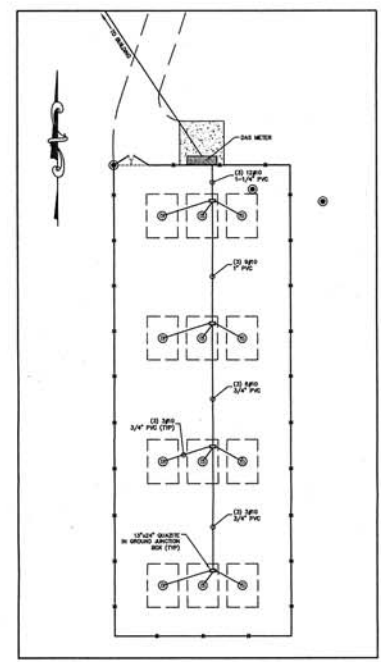
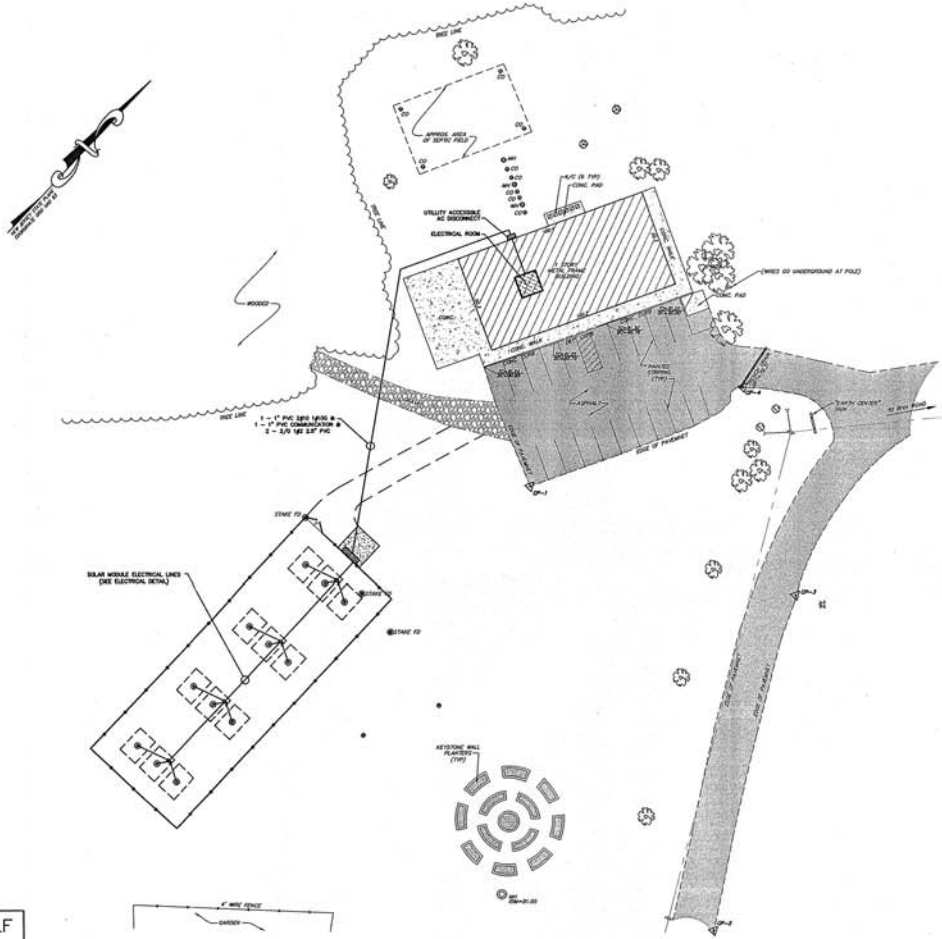
1. EXISTING CONDITIONS TAKEN FROM PLAN ENTITLED, "LOCATION SURVEY W/ TOPOGRAPHY, DAVIDSON'S MILL POND PARK, RIVA ROAD, TOWNSHIP OF SOUTH BRUNSWICK, MIDDLESEX COUNTY, NEW JERSEY," DATED NOVEMBER 18, 2006, PREPARED BY DKV CONSULTING, LLC.
2. HORIZONTAL COORDINATE SYSTEM: NEW JERSEY STATE PLANE COORDINATE GRID NAD 83.
3. VERTICAL DATUM: NAVD 83.
4. CONTRACTOR SHALL NOTIFY DESIGN ENGINEER IMMEDIATELY UPON DISCOVERING ANY DISCREPANCIES.
- 5.

DK CONSULTING, L.L.C.
147 UNION AVENUE
MIDDLESEX, NEW JERSEY

DK CONSULTING, L.L.C.
147 UNION AVENUE SUITE 1C
MIDDLESEX, NEW JERSEY 08846
PHONE: 732-764-6100 FAX: 732-764-0990
NEW JERSEY CERTIFICATE OF AUTHORIZATION NO. 246A28142200

Christian M. Kastrud
Professional Engineer N.J. Lic: 246E0161200

REV. No.	DESCRIPTION	DATE
COVER SHEET		
SOLAR PHOTOVOLTAIC SYSTEM SITE DESIGN DAVIDSON'S MILL POND PARK TOWNSHIP OF SOUTH BRUNSWICK, MIDDLESEX COUNTY, NEW JERSEY		
FAI ELECTRICAL CONTRACTORS License & Permit No. 8398 140 Eleventh Street Piscataway, NJ 08854 (732) 965-9400 Fax: (732) 966-8888		
SCALE: 1" = 30'	OWN BY: REP	CHKD BY: TP/CMK
DATE: December 5, 2006	PROJECT: DPW#06-31779P0	SHEET 1 OF 5



SOLAR MODULE ELECTRICAL DETAIL
SCALE: 1"=2'

PROTECT YOURSELF
A PHONE CALL
CAN BE YOUR INSURANCE POLICY

WHAT YOU DON'T KNOW CAN HURT YOU.
THE STATE OF NEW JERSEY REQUIRES INVESTIGATION OF EXISTING UTILITIES, STRUCTURES, OR AIR POLLUTION PROBLEMS TO DETERMINE THE EXACT SURFACE APPEARANCE IN THE STATE.

REV. No.	DESCRIPTION	DATE
ELECTRICAL PLANS		
SOLAR PHOTOVOLTAIC SYSTEM SITE DESIGN DAVIDSONS MILL POND PARK TOWNSHIP OF SOUTH BRUNSWICK, MIDDLESEX COUNTY, NEW JERSEY		
FAIRGON ELECTRICAL CONTRACTORS License & Permit No. 6398 140 Greenbush Street Florham Park, NJ 08534 (732) 968-9400 Fax: (732) 968-6880		
SCALE: 1" = 30'	DWN BY: MSP	CHK'D BY: TF/CMK
DATE: December 5, 2009	PROJECT: DPW#09-3172PP0	SHEET 4 OF 5

ADAM G. STERN
Professional Engineer
N.J. Lic. 41636

